

# Electronic Magnetic Lock 300LBS

## AR-0300M



### Table of Contents

01. <a href="#">Product Features</a>	01
02. <a href="#">JUMPER Setting</a>	01
03. <a href="#">Specification</a>	01
04. <a href="#">Connector Table</a>	01
05. <a href="#">Wiring Diagram</a>	01
06. <a href="#">Installation Manual</a>	02
07. <a href="#">Installation Instructions</a>	03
08. <a href="#">Installation with Bracket</a>	04
09. <a href="#">Product Content</a>	04

### 01. Product Features

- The magnetic lock is designed without any mechanical structure, high reliability and reinforced aluminum alloy casing.
- The amature plate has a special anti-residual magnetism design, and a variety of optional installation auxiliary bracket that are suitable for all door types.

### 02. JUMPER Setting



12V

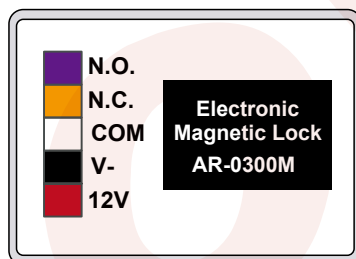


24V

### 03. Specification

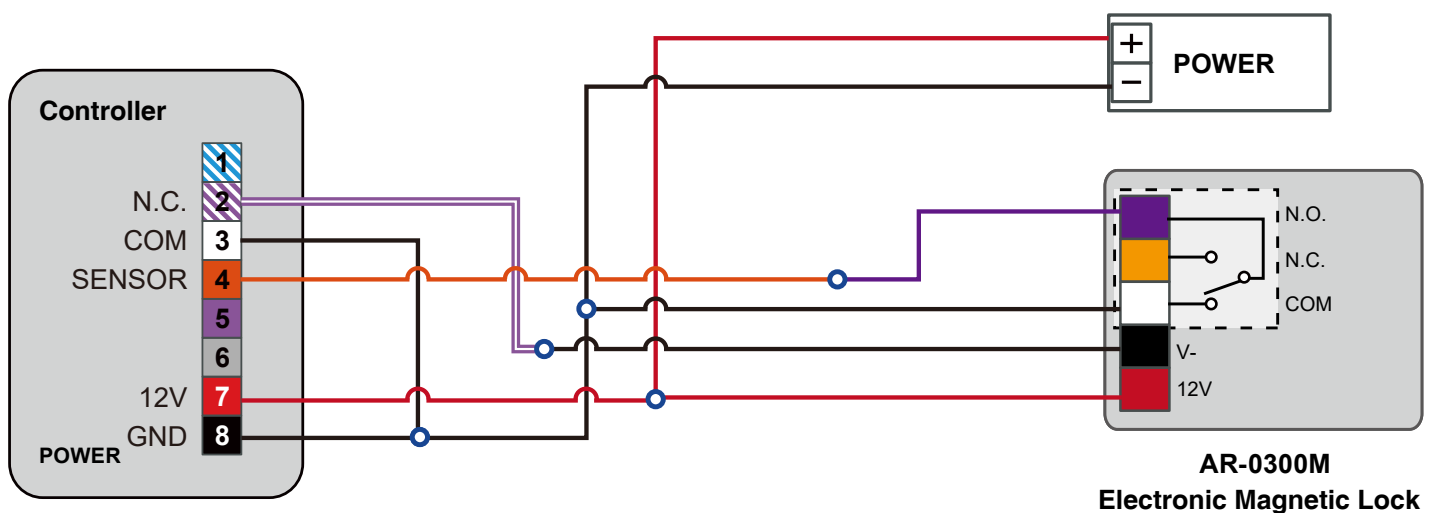
Operating Voltage	12 to 24 VDC	Temperature	Lock Surface: $\leq$ ambient temperature $\pm 20^{\circ}\text{C}$ Operating: $-10^{\circ}\text{C} \sim +55^{\circ}\text{C}$
Current Draw	12VDC - 370mA 24VDC - 185mA	Humidity	0~95% non-condensing
Material	Lock Housing: Alluminium Alloy, Armature Plate: Pure Iron, Bracket: Alluminium Alloy	Bracket Type	Z&L Bracket: AR-0300MZL (Z and L Bracket can be purchased separately) U Bracket: AR-0300M-U/AR-0400M-U
Dimmension(mm)	Magnet: 28(H)X160(W)X17(D) Armature Plate: 28(H)X130(W)X8(D)	Door Monitoring Output	YES
Holding Force(kg)	150	Net Weight (kg)	approx. 0.95kg
Solenoid Test	Over 500,000 times	LED indicator	No

### 04. Connector Table



Wire Application	Color	Description
Door Monitoring Output	Purple	N.O.
	Yellow	N.C.
	White	COM
Power	Black	Power DC 0V(GND)
	Red	Power DC 12V

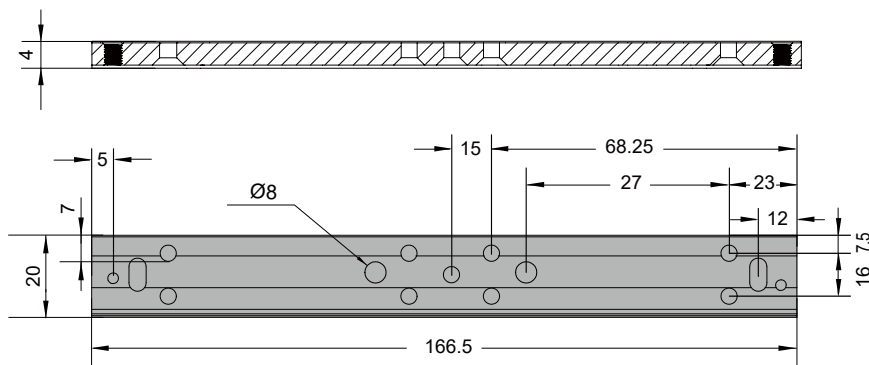
### 05. Wiring Diagram



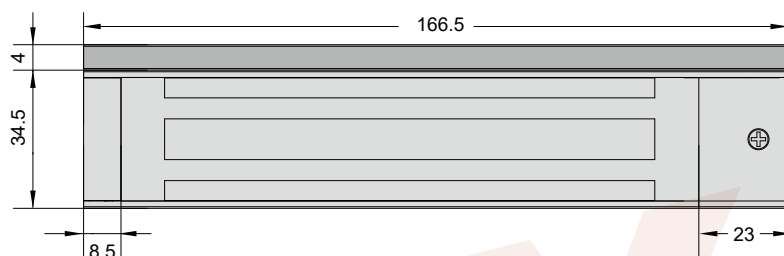
## 06. Installation Manual

### Dimension and Diagram

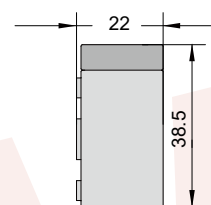
Unit (mm)



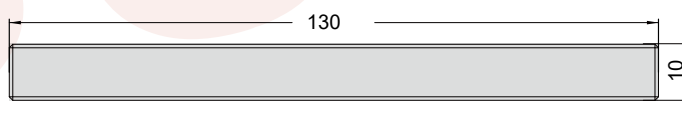
**Lock Body Top view**



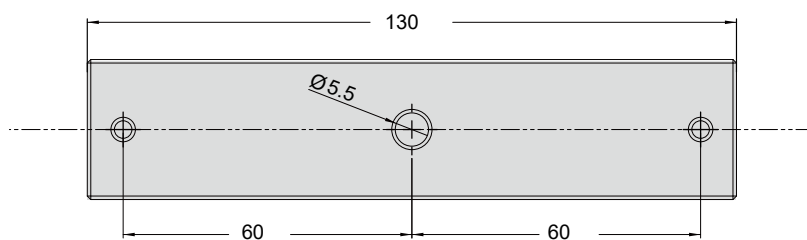
**Lock Body Front view**



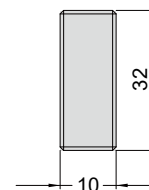
**Lock Body Side view**



**Armature Plate Top view**



**Armature Plate Front view**

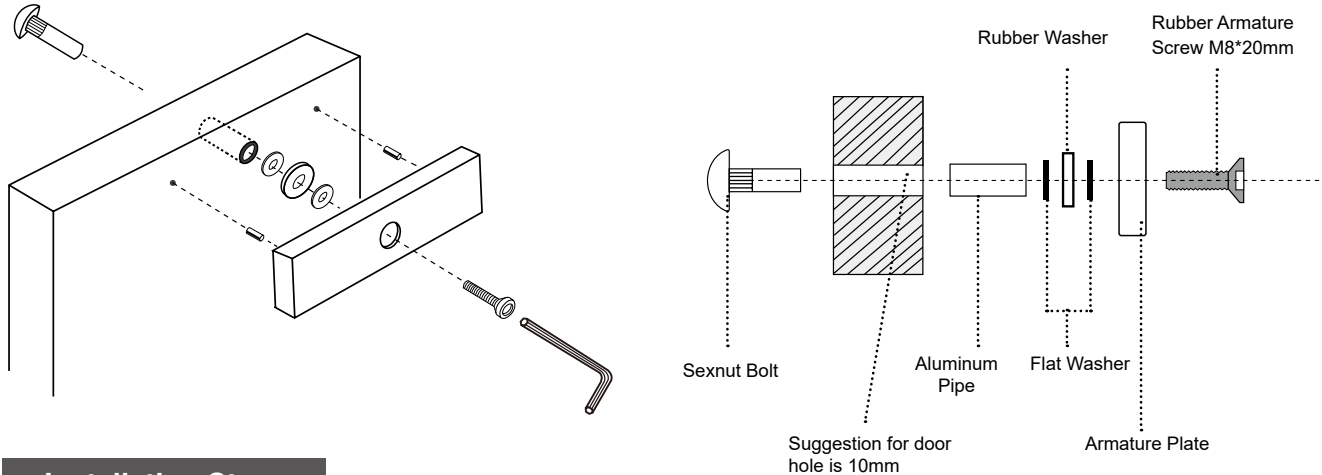


**Armature Plate Side view**

### 07. Installation Instructions

#### Armature Plate

#### Armature Installation Side View



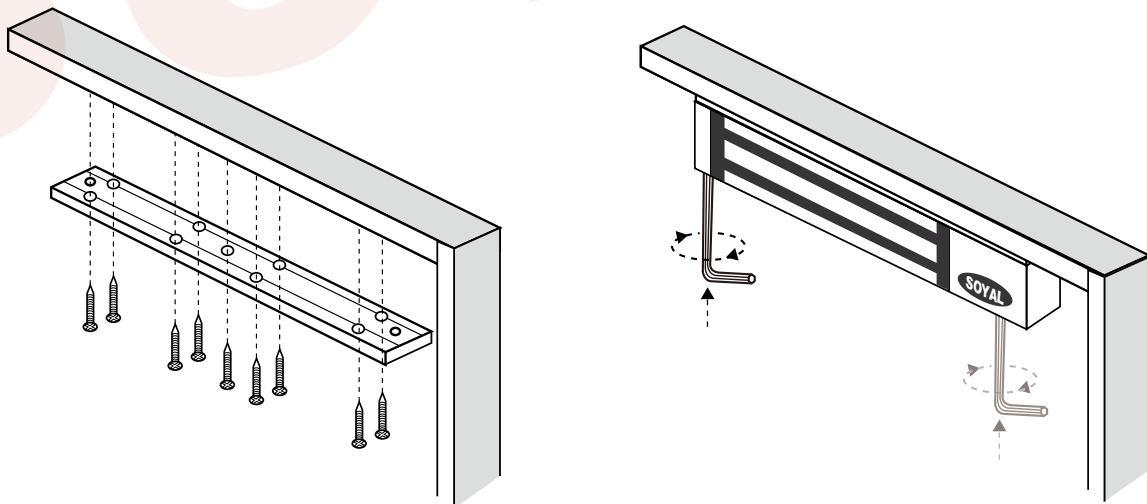
#### Installation Steps

**STEP 1 :** Make sure the strike plate position, drive a hole on the door by the size of M5 flat head screw at the center position of strike plate ( To fit mushroom head screw and aluminum tube). Insert 2 pin at the two side of strikeplate. At the same position of 2 pins, drive match holes ( 5~6mm diameter ) on the door.

**STEP 2:** Between strike plate and door, install 2 washers and 1 rubber in the middle of two washers. Behind the door, insert aluminum tube ( length depends on the door thickness ). Use mushroom head screw to lock strike plate on the door.

※Note: Make sure the plate can be slightly shaken when locked. This will have better conjunction to the magnet body and reach the best efficiency.

#### Lock Body



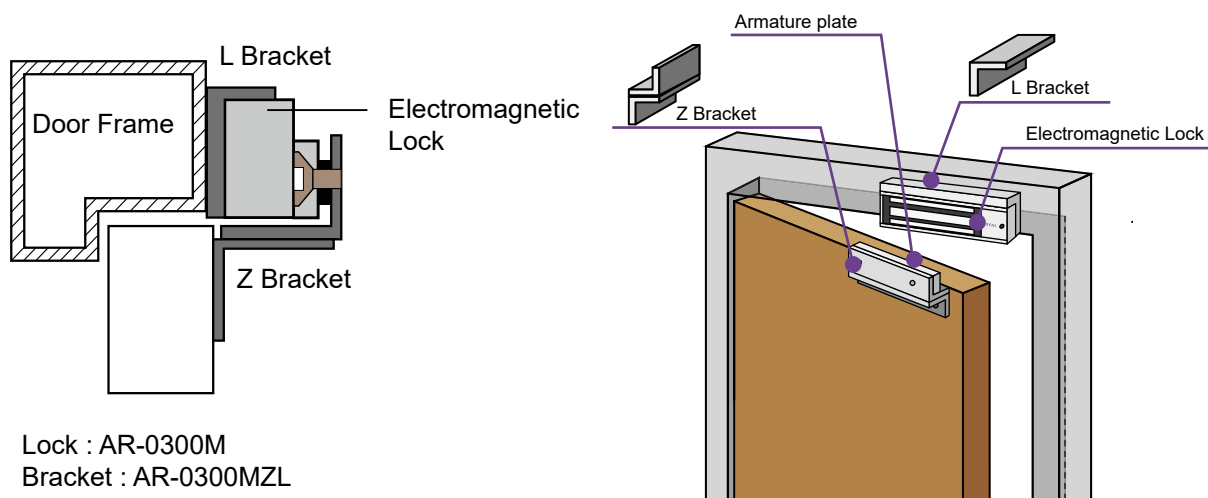
#### Installation Steps

**STEP 1 :** Use 9 screws for settlement plate to fix the strike plate and magnet body on the door frame tightly.

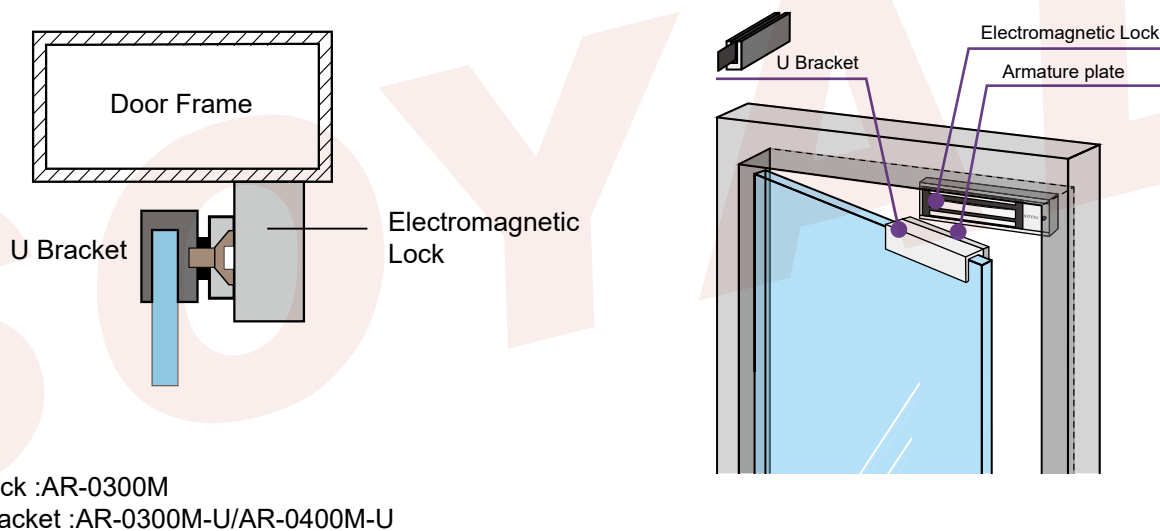
**STEP 2 :** Use a hex wrench to secure the magnetic lock body to the mounting bracket. After installation, test the magnetic holding force.

## 08. Installation with Bracket

### Narrow Door Installation (Inswing Door)



### Frameless Glass Door



## 09. Product Content

### AR-0300M

### Accessories & Tools

